



# BIDWELL MEWS

HOUGHTON REGIS



## The Adams

3 bedroom

Plots as drawn: 7, 10, 25, 56, 65, 76, 78, 82, 84, 86 & 99

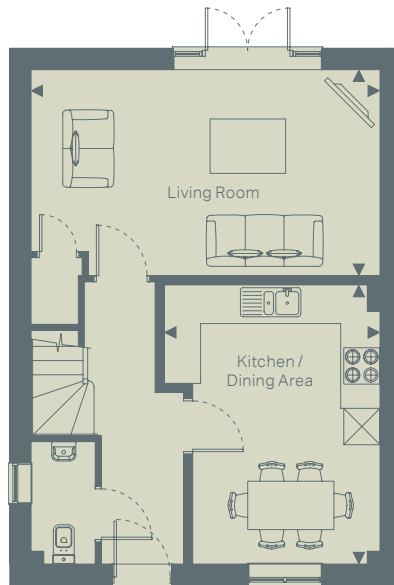
Plots handed: 6, 11, 26, 57, 66, 75, 77, 81, 83 & 85

# The Adams

## 3 bedroom

Plots as drawn: 7, 10, 25, 56, 65, 76, 78, 82, 84, 86 & 99

Plots handed: 6, 11, 26, 57, 66, 75, 77, 81, 83 & 85



### Ground Floor

#### Living Room

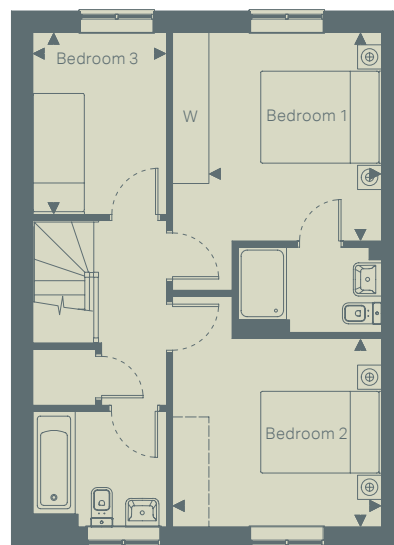
5.76m x 3.40m

18' 10" x 11' 1"

#### Kitchen / Dining Area

4.61m x 3.56m

15' 1" x 11' 8"



### First Floor

#### Bedroom 1

3.44m x 2.85m

11' 3" x 9' 4"

#### Bedroom 2

3.45m x 3.11m

11' 3" x 10' 2"

#### Bedroom 3

3.00m x 2.21m

9' 10" x 7' 3"